



# The Thai Red Cross Society





*พระบรมราชูปถัมภ์@ราชอาณาจักรไทย*

พระบาทสมเด็จพระปรมินทรมหาภูมิพลอดุลยเดชมหาราช

*อภานิธิยา@ราชอาณาจักรไทย*

สมเด็จพระนางเจ้าสิริกิติ์ พระบรมราชินีนาถ



**His Majesty King Bhumibol Adulyadej**

*Patron*



**Her Majesty Queen Sirikit**

*President*





**Her Royal Highness Princess Maha Chakri Sirindhorn**

*Executive Vice-President*



อุปถัมภ์ผู้อำนวยการอุทยานชาติไทย  
สมเด็จพระเทพรัตนราชสุดา เจ้าฟ้ามหาวชิราวุธ  
รัฐสีมาคุณากรปิยชาติ สยามบรมราชกุมารี



**+ Mr. Phan Wannamethee**

**Secretary General  
The Thai Red Cross Society**



สภาราชชาดไทย  
The Thai Red Cross Society



# The Fundamental Principles of The International Red Cross and Red Crescent Movement

1. *Humanity*
2. *Impartiality*
3. *Neutrality*
4. *Independence*
5. *Voluntary Service*
6. *Unity*
7. *Universality*





# Mission of the Thai Red Cross Society



The Thai Red Cross Society (TRCS), in the spirit outlined by the Fundamental Principles of the International Red Cross and Red Crescent Movement, promotes the ideals of the Red Cross and of the International Humanitarian Law, to alleviate human suffering, and provides health services to the most vulnerable including children, women, the aged and the disabled. The activities of the Thai Red Cross Society are focused in four areas: medical and health care services, disaster preparedness and response, blood transfusion services and the promotion of the quality of life of vulnerable people. It seeks to alleviate human suffering and improve the life of the common people. It enlists the co-operation of youth and volunteers. It strives to build a dynamic organization, enhancing the quality of its services through good governance and management, and capacity building to reach vulnerable people in times of needs.



# ***Core Areas of Activities of the Thai Red Cross Society***

The works of the Thai Red Cross Society cover a wide range and diversity of activities carried on by its many bureaux, institutions and specialized centres. These can be grouped into four core areas namely Medical and Health Care, Disaster Preparedness and Response, Blood Transfusion Services and Quality of Life Promotion and Social Welfare.

## ***Medical and Health Care***

- + King Chulalongkorn Memorial Hospital
- + Queen Savang Vadhana Memorial Hospital
- + Queen Saovabha Memorial Institute
  - Biomedical Services
- + Red Cross College of Nursing
- + Rehabilitation Centre
- + Eye Bank
- + Organ Donation Centre
- + AIDS Research Centre

## ***Disaster Preparedness and Response***

- + Relief Operation
- + Mobile Medical Team
- + Psychological Support
- + First Aid Training
- + Stocking:
  - Medical Supplies
  - Relief Supplies
- + 75 Provincial Chapters

## ***Blood Transfusion Services***

- + Blood Collection, Testing, Distribution
- + Blood Fractionation
- + Blood Reagents Preparation
- + Blood Bags Production
- + 12 Regional Lab Centres
- + Research & Development
- + 75 Provincial Chapters

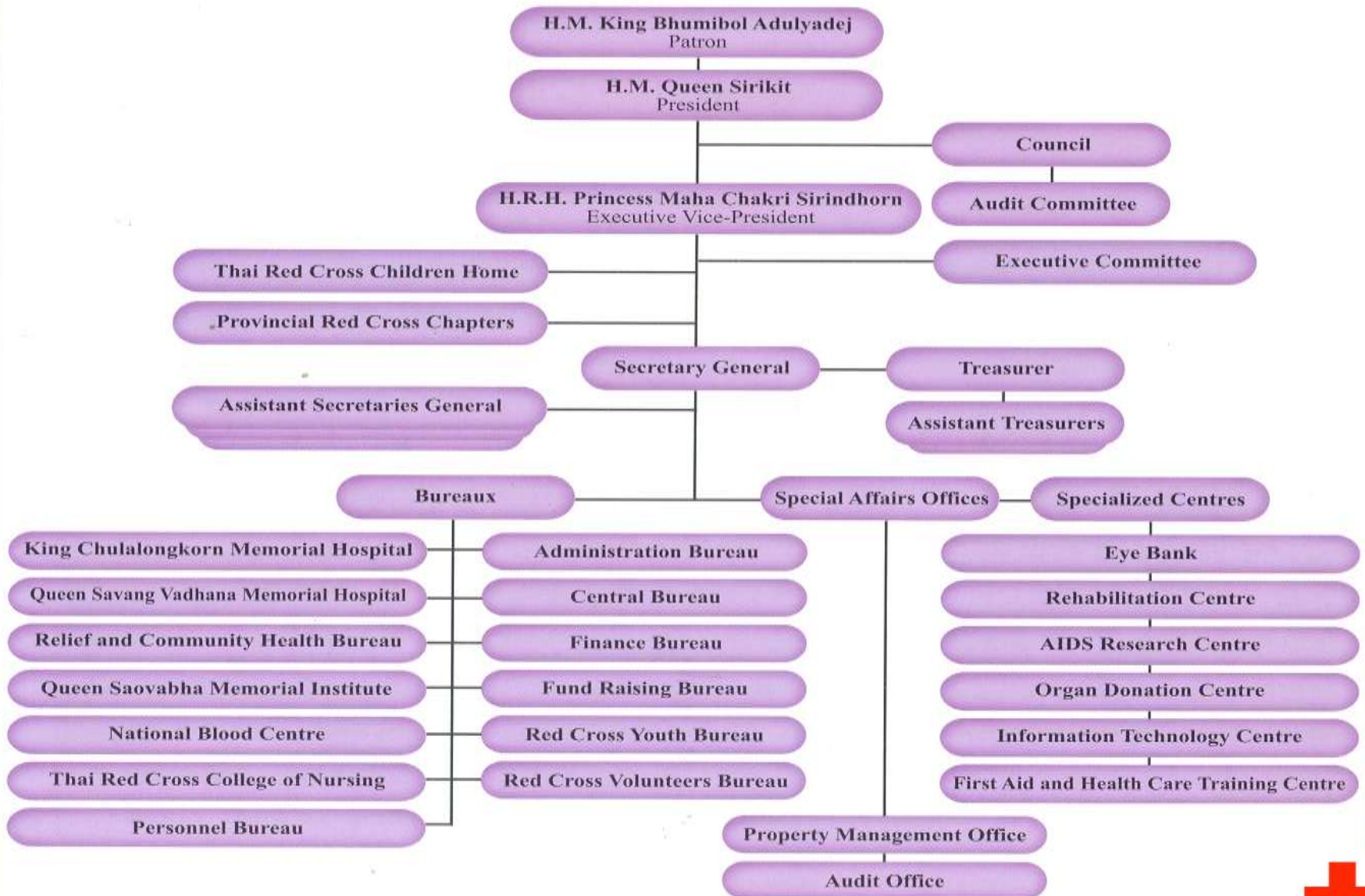
## ***Quality of Life Promotion and Social Welfare***

- + Children:
  - Children Home
  - Day Care Centre
- + Elderly Home
- + Disabled
- + Home Care
- + Volunteers
- + 75 Provincial Chapters





# Thai Red Cross Organization Chart







*Lt.Gen. Amnat Barlee, M.D.  
Director*

**RELIEF AND COMMUNITY HEALTH BUREAU  
THE THAI RED CROSS SOCIETY**



# WORLD SHOCK TSUNAMI IN ANDAMAN SEA





Tsunami



Tsunami

*Attack the west coast at Thailand 26<sup>th</sup> December 2004*



สภาราชการไทย  
The Thai Red Cross Society



















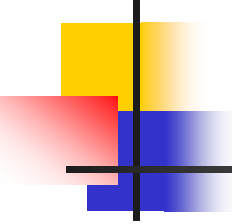


- 
- 5,395 killed (2,059 Thais, 2,436 foreigners  
900 unidentified )
  - 8,457 injured and 2,817 missing
  - 58,550 affected ( 12,815 families )
  - 1,172 children become orphans

*(DDPM, MOI at September 5, 05)*

**AFFECTED PEOPLE**



- 
- 407 villages in 95 tambons (subdistricts) in 25 districts in 6 provinces (Phuket , Phang Nga , Ranong , Krabi , Trang and Satun)
  - Public facilities , business properties , fishing boats and tools etc. 14,934,159,194 baht worth.
  - 3,302 houses are wholly damaged and 1,504 partly damaged.

*(DDPM, MOI at September 5, 05)*

**PROPERTIES DAMAGED**



สภาราชชาดไทย  
The Thai Red Cross Society



สมเด็จพระเทพรัตนราชสุดาฯ สยามบรมราชกุมารี  
เสด็จทรงงานและมอบนโยบายในการช่วยเหลือ



DEC 27, 2004 : TRCS HEAD QUARTER



สภากาชาดไทย  
The Thai Red Cross Society





**HRH Maha Chakri Sirindhorn's mercy  
and leading role is invaluable.**



สภาชาตไทย  
The Thai Red Cross Society





# RELIEF



สภากาชาดไทย  
The Thai Red Cross Society



# LOGISTICS





# LOGISTICS





# MEDICAL AND SURGICAL CARE





**BLOOD DONATE**





# ASSESSMENT AND EVACUATION





# ASSESSMENT





# DISTRIBUTE





**MOBILE MEDICAL UNIT / RELIEF**





**MEDICAL / NURSING TEAM**



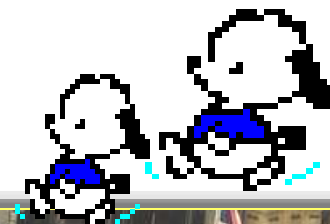


# VOLUNTEER



สภากาชาดไทย  
The Thai Red Cross Society





**VOLUNTEER**





**EM TECHNOLOGY**



สภากาชาดไทย  
The Thai Red Cross Society



# HANDLING WATER SUPPLY





# IMPROVING ENVIRONMENT



สภากาชาดไทย  
The Thai Red Cross Society



# FRAMEWORK

- TO RESTORE THE LIVELIHOOD
- ASSISTANCE TO CHILDREN
- HOUSING
- PUBLIC HEALTH, SANITATION AND ENVIRONMENT
- CAPACITY BUILDING

## REHABILITATION



สภากาชาดไทย  
The Thai Red Cross Society





**H.R.H. Princess Maha Chakri Sirindhorn  
providing aid to the affected people.**





**TO RESTORE THE LIVELIHOOD**



สภากาชาดไทย  
The Thai Red Cross Society





**TO RESTORE THE LIVELIHOOD**





**TO RESTORE THE LIVELIHOOD**





**TO RESTORE THE LIVELIHOOD**



สภากาชาดไทย  
The Thai Red Cross Society





**ASSISTANCE TO CHILDREN**





**ASSISTANCE TO CHILDREN**





# HOUSING





# HOUSING





**PUBLIC HEALTH, SANITATION AND ENVIRONMENT**



สภากาชาดไทย  
The Thai Red Cross Society



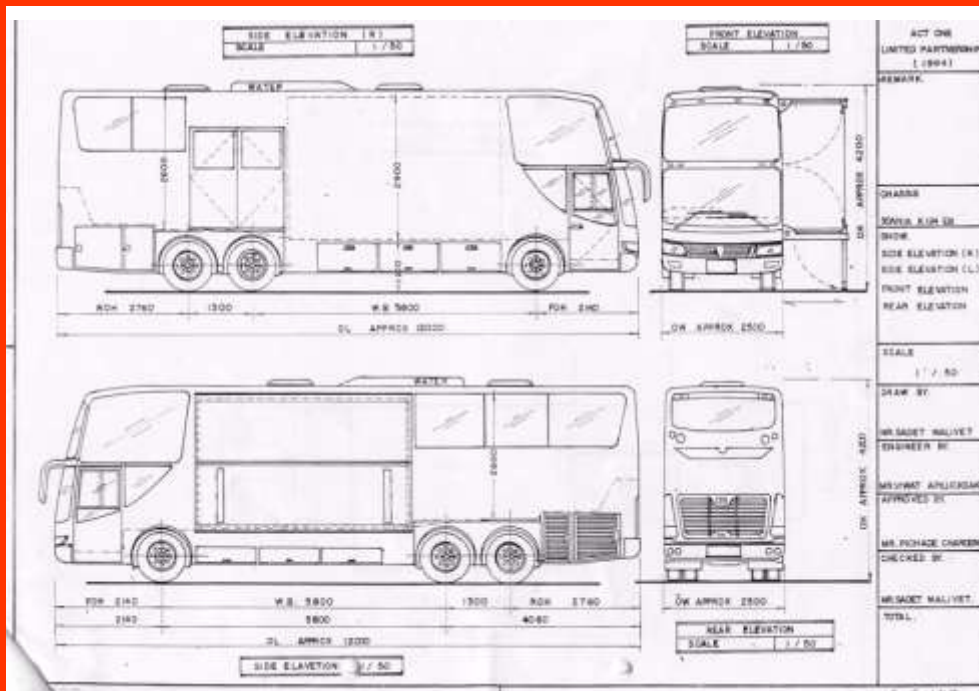


**PUBLIC HEALTH, SANITATION AND ENVIRONMENT**



สภากาชาดไทย  
The Thai Red Cross Society





# CAPACITY BUILDING





# CAPACITY BUILDING







*Thank You*